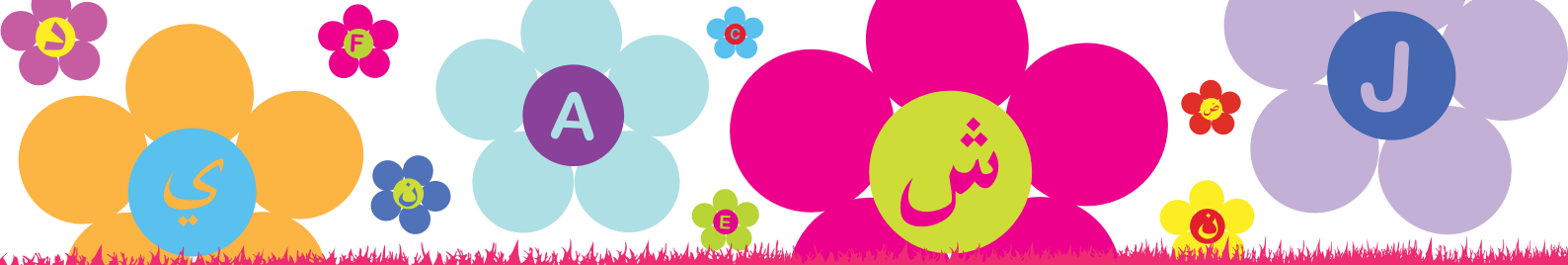




Blossom
Nursery
planting seeds of goodness



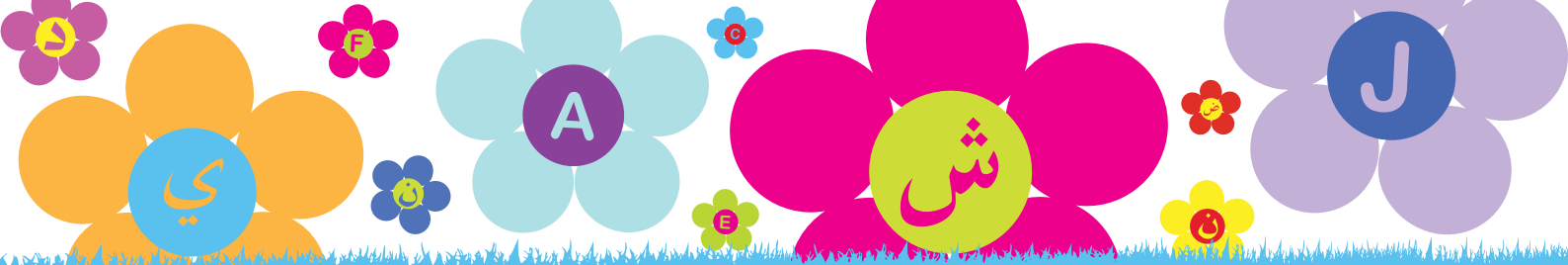
The Nursery

Blossom Nursery is a new and unique children's nursery that is committed to providing the highest standard of care and the best in early childhood learning practices, in a secure, stimulating and caring environment. Join us in a journey to enlightenment.

Our environment is created to be the children's best place and where they can feel safe and welcome. Meeting their physical, cognitive and emotional developmental needs, we will seek to create the environment in which the child can flourish through child-centred activities and play.

Our goal and focus is to create a place, which will be a second home for your child, and one in which you have the confidence to know your child's development is being achieved with the highest of Islamic principles and the finest of educational practises. Your child is our Trust.





Our Approach

At Blossom Nursery, we believe that children need a safe, healthy and loving environment where they can learn by discovering the world around them. We take pride in fusing Islamic understanding with the latest in learning in the field of educational sciences to ensure premier outcomes for your child.

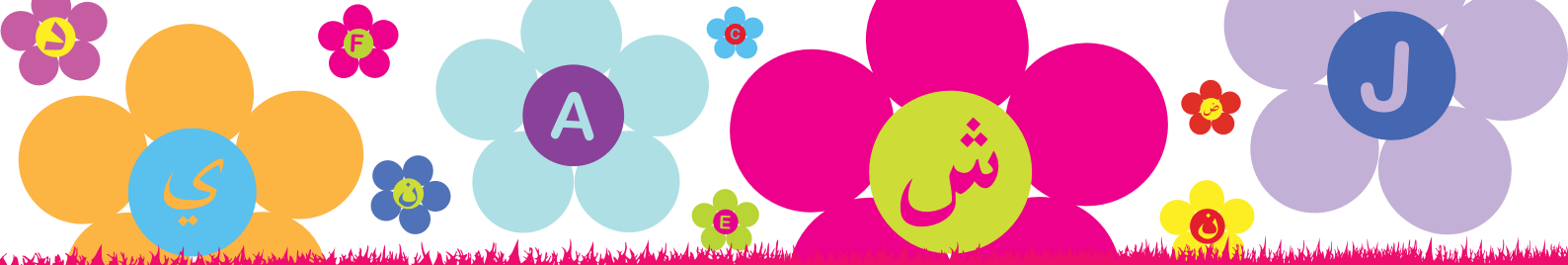
Children need to be gently guided through this ongoing process by the adults that filling each day with stimulating experiences and opportunities for interpersonal relationships. A carefully planned, developmentally appropriate daily programme will help your child develop to his/her full potential.

The ability to develop trusting relationships with adults other than parents, play happily with their peers and take responsibility for themselves will also be encouraged. Children thrive in small groups with sufficient well-trained staff to give individual attention in an atmosphere that makes learning enjoyable and satisfying. This is why we promise to maintain one of the best adult to child ratios in our nursery.

We believe that the first five years of life shape what the child going to be in the future, hence children today and leaders tomorrow, so let plant the seeds of goodness that flourish to create the generation we aiming for.

At the heart of all this is an approach founded on maturing a developing an understanding in the child of their faith by ensuring Islamic principles are at the centre of all activity in the nursery.



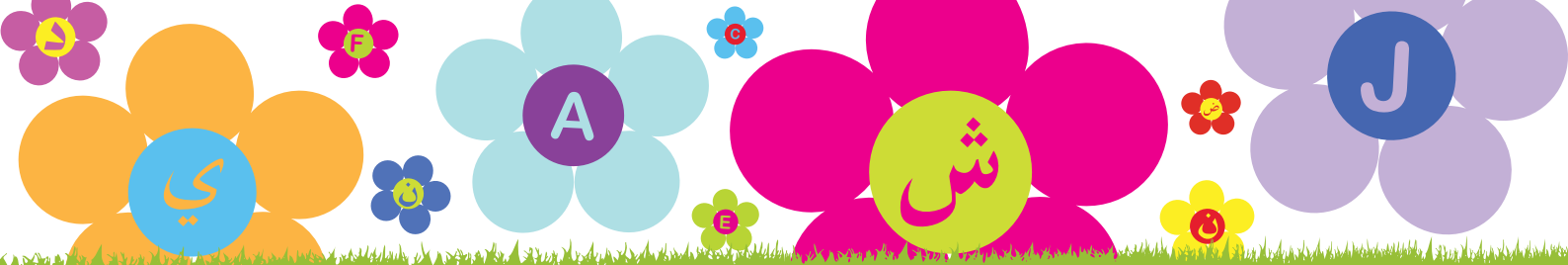


Our aims

The nursery takes great pride in the aims it has set itself to ensure the development of your child. The Blossom Charter represents our key aims to ensuring the best possible outcomes for your child in our care:

- Blossom Nursery aims to plant the seeds of goodness
- Blossom Nursery aims to care for children in a manner that is relaxed, friendly, stimulating, inspiring, providing children with the confidence to grow and learn at their pace, in an environment that is safe, with people they can trust and provide good role models.
- We will respect and pay due regards to each child's individual needs taking into account their race, gender, ethnicity, language and disability.
- When parents bring their children to us we want them to feel happy and secure in the knowledge that we will promote positive behaviour by creating an atmosphere of trust, security and mutual respect.
- We aim to help children become successful learners, confident individuals, responsible citizens and effective contributors to community as a whole.





The Curriculum

Our curriculum is child self learning and theme-based, providing teachers with a framework that offers guidance, yet allows flexibility, in order to accommodate children's stages of development and their preferences. Parents wishing their children to learn Quran, Arabic and ethics, can relax in the knowledge that their loved ones will be surrounded by the love, peace, and tolerance that is Islam. From toddlers to Upper Foundation, each Muslim child will hear:

- Quran tajweed
- Anasheed
- Hadiths
- Stories of the Prophets (Peace Be Upon Them),
- The wonderful words of "Al-Humduillah," "Mash'Allah," "Bismillah," and, "Subhan'Allah."

The curriculum is designed to incorporate the following educational station within the classroom, through which the themes are developed:

Little Explorer/ Science station
Little Muslim station
Home and role play station
Age-appropriate educational toys and puzzles corner
Language and math station
Computer station

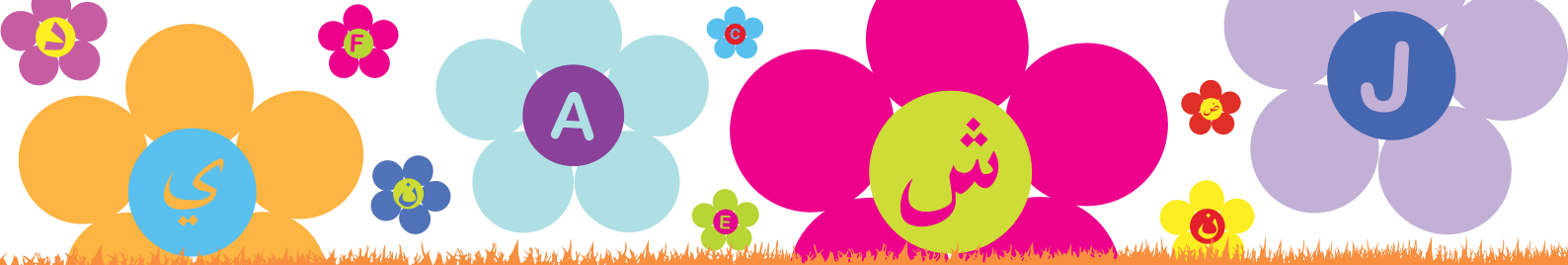
Construction station
Story /Quite station
Art and craft/graphic station
Messy corner (sand/water)

These stations stimulate the following areas of development:

Personal, social, spiritual and emotional development
Communication, language and literacy
Problem solving, reasoning and numeracy
Knowledge and understanding of the world
Physical development
Creative development

The equipment in both the large indoor playroom and spacious outdoor area has been selected to encourage and facilitate imaginative play and gross and fine -motor development.





Age Grouping

Alyasmeen Room

Alyasmeen Room provide care for children aged 2-3 years of age. The adult to child ratio here is 1 practitioner to 4 children.

Two's are very active and interested in objects and people. Our curriculum and classrooms are designed to support the independence your two-year-old exhibits, while providing the structure and guidance needed to encourage sharing and group play.

In this age group, we cater to the growing developmental needs of the children by directing the child towards more meaningful and purposeful play. This in turn leads the child to achieve some of the early childhood learning goals as set out in the curriculum. This is achieved by furnishing the classrooms with various Learning Centres, including:

Book and Storytelling station | Arts & Crafts Centre
Games and Puzzles Centre | Block Centre | Dramatic Play Centre

Each day, your child will engage in various hands-on activities; they will explore, inquire and discover solutions working by themselves, with a friend or teacher or in small groups.

Arrayhan room

Arrayhan room is the Pre-School classroom which provides care for children aged 3 to 5years. The adult to child ratio is 1:8.

This class provides an excellent educational programme, which will prepare your child for his/her formal schooling. This programme will include learning the alphabet, numbers, shapes, colours and songs in both English and Arabic. The Learning Centres and Learning materials provided in this room are age-appropriate and designed to encourage development in literacy, numeracy, communication skills and creativity, while also providing challenges for any eager explorer.

Free nursery sessions are available for children eligible for NEF (nursery education fund).

Our outdoor area is a learning environment which provides a garden, planting area, storytelling and physical activity area.



Our Policy

- 1** We aim to ensure that all sections of our community have access to the Nursery through open, fair and clearly communicated procedures.
- 2** Staff will ensure that a warm, caring and secure relationship is built with children and their care.
- 3** Our Nursery believes that children flourish best when they know how they are expected to behave and should be free to play and learn without fear of being hurt or unfairly restricted by anyone else.
- 4** We welcome suggestions on how to improve our Nursery and will give prompt and serious attention to any concerns about the running of the Nursery.
- 5** All children are assessed individually and their personal needs are cared for.
- 6** It is our intention to respect the privacy of children and their parents and carers, while ensuring that they access high quality Nursery care and education.
- 7** Systems are in place to ensure that children cannot leave the premises without an authorised adult and that children are properly cared for in the event of a delay to their collection at the end of a session.
- 8** The adults to child ratios are monitored closely to ensure the safety of the children at all times. Students are not included in the staff to child ratios.
- 9** Our Nursery is committed to providing equality of opportunity and anti-discriminatory practice for all children and families.
- 10** All equipment is of safe, clean, suitable and age appropriate.
- 11** A high standard of hygiene is maintained at all times.
- 12** All accidents are recorded and parents informed.
- 13** Staff do not discriminate against any child or parents on the grounds of race, culture, gender, disability, or lifestyle.
- 14** All parents are welcome to our policies and procedures and the folder is available for them to read at any time.
- 15** We see every parent and every child a key stakeholder in our business



Admission Policy

To register your child at the nursery, you must return a completed registration form, stating the sessions that you require and the date that you would like to your child to start. An administration fee of £25 is required with your registration form and a completed direct debit mandate. (Direct Debit is the required payment method for a registration to be completed.) Should there be a waiting list for the sessions that you require, the date on your registration form will be used to determine who is offered the session first, as sessions are allocated on a first come, first basis.

When you register your child, you will be told whether the sessions are available or not. If waiting list is in operation, the officer in charge will do her best to inform you of the length of time that you may have to wait for sessions.

If you wish to cancel the place you have registered for any reason, we ask that you notify us so that the place can then be offered to someone else.





Blossom Nursery

10 Nesfield Street | Bradford | BD1 3ET
info@blossomnursery.co.uk | www.blossomnursery.co.uk